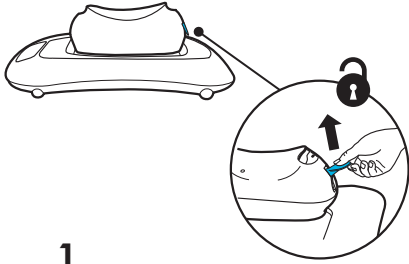
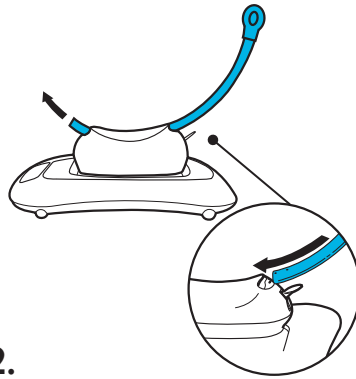


# Assembly



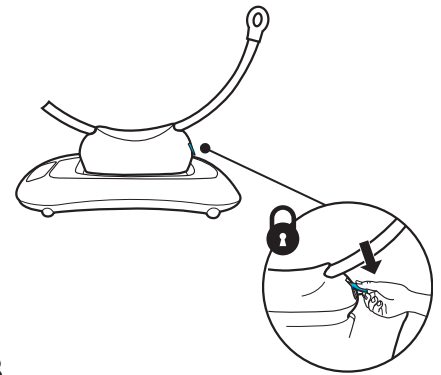
**1.**

Unlock Seat Recline Switch.



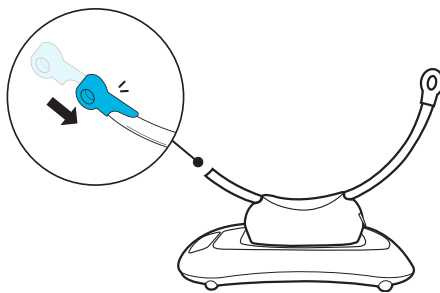
**2.**

Slide Center Support Tube through the back of the base.



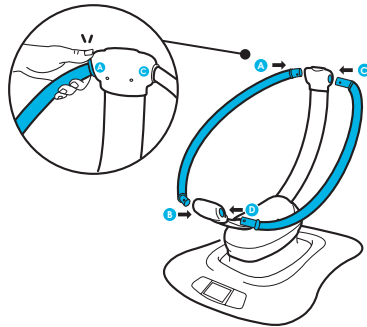
**3.**

Lock the Seat Recline Switch.



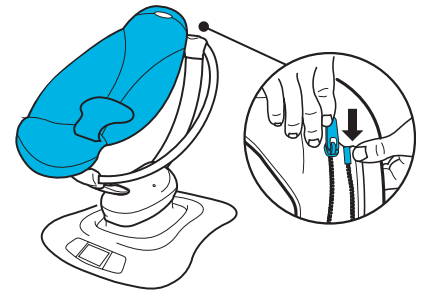
**4.**

Install the Front End Cap until you here a "click" and it can no longer be removed.



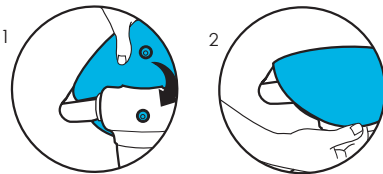
**5.**

Press the Side Rails into the End Caps until you hear a "click" and they can no longer be removed.



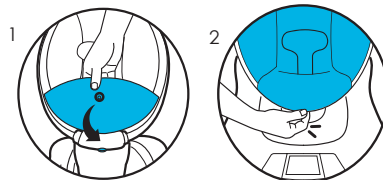
**6.**

Zip in the fabric.



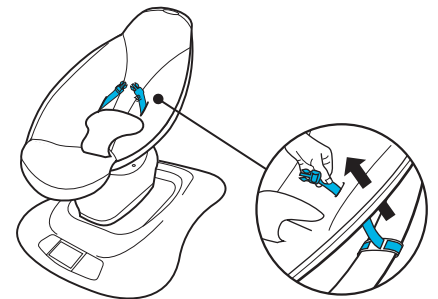
**7.**

Pull top of fabric over the toy bar opening and snap into place.



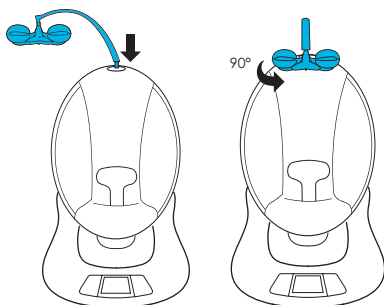
**8.**

Pull the bottom of the fabric down and snap into place.



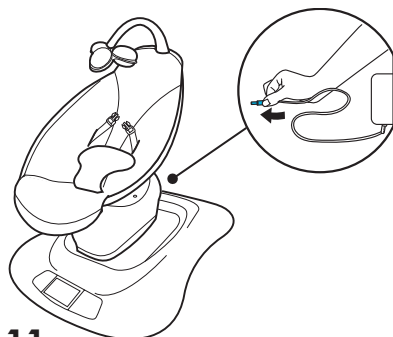
**9.**

Thread Child Restraint Harness through the back of the fabric.



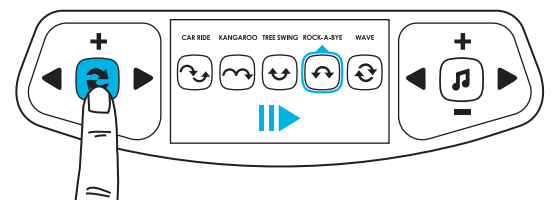
**10.**

Install the Toy Bar by inserting the bar sideways and turning 90° so it is facing forward.



**11.**

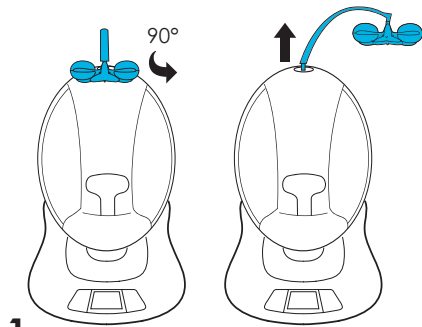
Once assembled, plug into power supply.



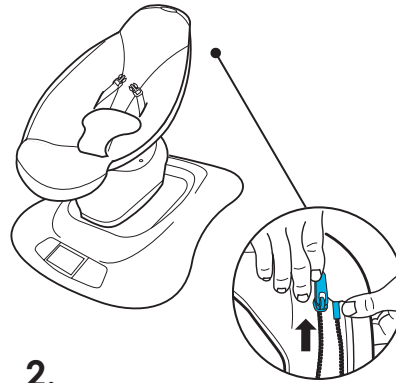
**12.**

Start the motion by pressing the Play button.

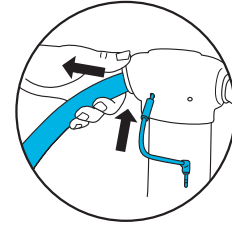
# Disassembly



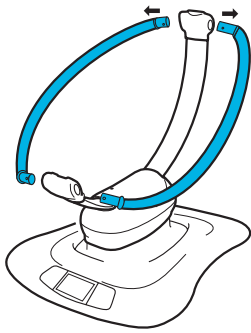
**1.**  
Remove the Toy Bar. Turn 90° so it is facing sideways, then remove.



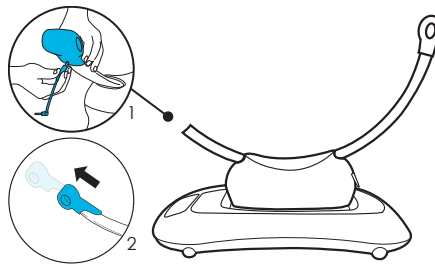
**2.**  
Remove the fabric. Unzip the fabric. Unsnap the fabric at the top and bottom.



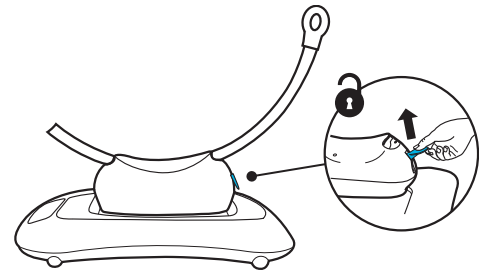
**3.**  
Use the MP3 cord to depress the ball lock on the underside of the Top and Bottom End Cap.



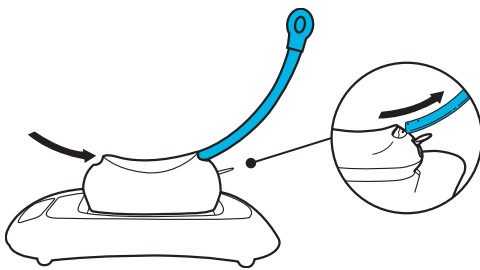
**4.**  
Remove the Left and Right Side Rails.



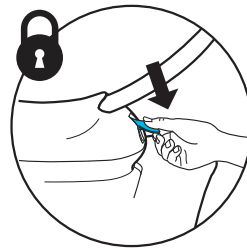
**5.**  
Use the MP3 cord to depress the ball lock on the underside of the Bottom End Cap. Remove the End Cap.



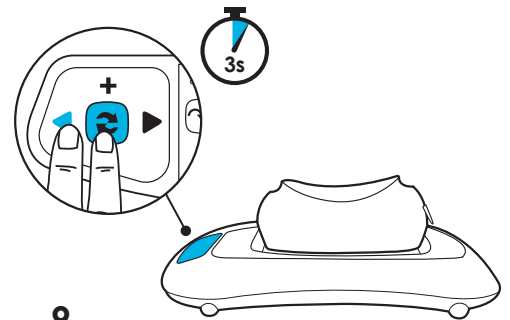
**6.**  
Unlock the Seat Recline Switch.



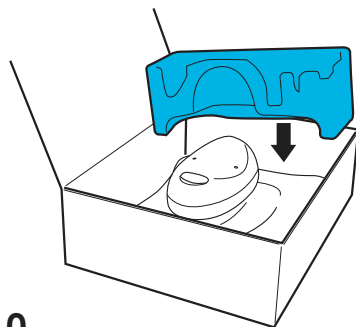
**7.**  
Slide the Center Support Tube out of the Base.



**8.**  
Lock the Seat Recline Switch.



**9.**  
To fit back in the box, press and hold the Play and Left Arrow buttons for 3 seconds.



**10.**  
Place Base in the box and then cover with packaging materials.